



VK36 BODY-WORN CAMERA



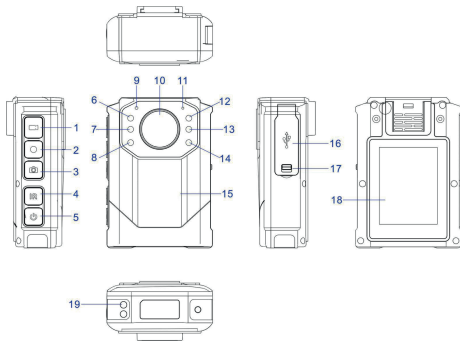
TABLE OF CONTENTS

SPECIFICATION	02
CHARGING METHODS	03
VIDEO RECORDING	04
PHOTO MODE	05
TROUBLESHOOTING	06
OPERATION	08
PACKING LIST	09
ATTACHING THE BELT CLIP	10
VIDEO MODE	11

SPECIFICATION

Thank you for choosing the VK36 body-worn camera.

This simple guide will lead you through the set up and use of your VK36.



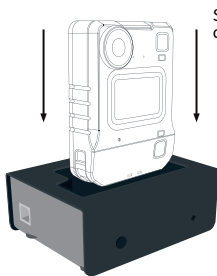
- | | |
|---|--|
| ① Video Recording / Additional Light Button | ⑩ Camera |
| ② Recording Button | ⑪ Microphone |
| ③ Camera Button | ⑫ Red and Blue Flashing Light-Blue Light |
| ④ IR Button | ⑬ Red and Blue Flashing Light-Red Light |
| ⑤ Power On/Off Button | ⑭ Infrared Light |
| ⑥ White Light | ⑮ Ink Screen |
| ⑦ Photo Resistor | ⑯ USB Port / TF Card Socket / Reset |
| ⑧ Infrared Light | ⑰ USB Push Button |
| ⑨ Indicator Light | ⑱ Display Screen |
| | ⑲ Desktop Charging Contact |

CHARGING METHODS

Upon receiving product, it is recommended that you fully charge the device before usage. Please charge the unit for 3 hours before using it or the first time to ensure that there is sufficient power.

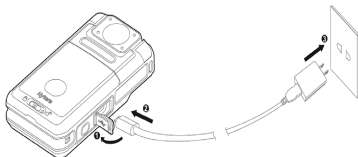
Use a USB data cable to charge the device and the factory-provided charger. The charging indicator light is always green during the charging process and goes out when fully charged.

Dock charger: After the dock charger is connected to the charger, the indicator light on the dock charger is red. The whole device is placed in the dock charger slot for charging. The green light of the audio and video recorder is always on during charging. After it is fully charged, the indicator light of the audio and video recorder goes out, and the indicator light of the dock charger remains unchanged.



Dock Charger

Slide down to
click into place



USB Data Cable

VIDEO RECORDING

When you use the audio and video recorder to record for the first time, please pay attention to the contents in this section!

- (1) In the preview interface, press the "Record Video" button to start recording, and the status indicator will flash red.
- (2) Briefly press the record button to end recording, the red indicator will turn off and you will return to the camera preview interface. The status indicator will turn green.
- (3) Press and hold "◀" or "▶" in the preview interface to zoom in or out of the preview interface for digital zoom.
- (4) When recording at night, in a dimly lit environment using infrared in manual mode, briefly press the "IR" button to switch to night recording mode. The screen will turn white / black. Press and hold the video recording button, and the additional light will turn on to complement the light source.
- (5) Press the "Photo" button to capture the current recording screen.
- (6) Press and hold the "IR" button during video recording. The file will be marked as an important file, and the marked file will not be deleted when looping video files.
- (7) The reference video recording interface is shown below:

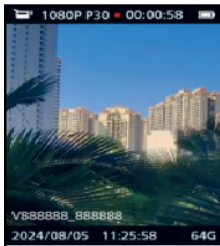


PHOTO MODE

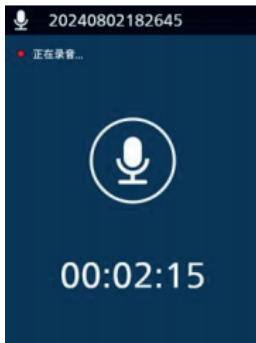
Please note the instructions in this section when taking your first photo with your Video Tracer! In the preview interface, press the "Camera" button to take a photo. While taking a photo, you will hear a "click" sound. If you take a photo in a dark environment, the device requires its infrared lamp or an additional lamp to ensure good quality videos. During video recording, the user can press the "Camera" button to take a photo.

Voice Recording:

When using the device to record audio for the first time, please read the instructions in this section.

- (1) Press the "Voice" button during video preview to start recording; the power indicator turns yellow; point the built-in microphone at the voice source.
- (2) Press the "Voice" button to end recording and return to the preview interface.

The recording interface is shown below.



TROUBLESHOOTING

Phenomena	Analysis	Solution
The product cannot be turned on	The battery may be improperly attached	Remove the battery and attach it again
	The battery may run out	Recharge or replace the battery
	The battery and the charging probes are in poor contact due to dirtied or damaged battery contacts	Clean the battery contacts
The volume is low when playing back	The microphone and the speaker are blocked or damaged	Clean the microphone and the speaker
The product cannot record video or audio	The TF card is full	Switch to disk mode, and delete all data from the TF card after exporting them
The product cannot take photo		

Phenomena	Analysis	Solution
The product cannot pre-record or extend-record the video	The pre- or extend-recording feature is not enabled	Enable the feature
The product does not turn on the IR LED automatically when recording video in dark environment	The IR LED feature is not enabled	Enable the IR LED feature
The product gives no alert tone; the indicator does not light up in dark environment	The Silent Mode is enabled	Disable the Silent Mode
The product gives no response to operations	The product has crashed	Press the Power On/Off key for 10 seconds to forcibly turn the product

OPERATION

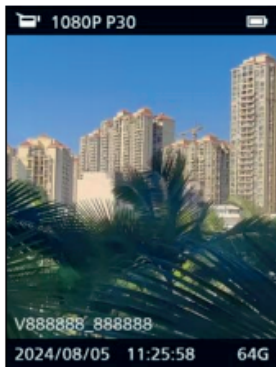
TO START / STOP RECORDING (CONFIGURABLE)

Users can activate recording by pressing on Power On / off Button on the side as shown.

Then the machine enters the preview interface, as shown in the figure below. In the preview state, the working status indicator lights up green. Short press the menu key in this interface and the machine returns to the setting interface. Long press the "◀" "▶" key to reduce or enlarge the preview interface to realize the digitalzoom function.

REMINDER:

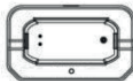
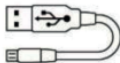
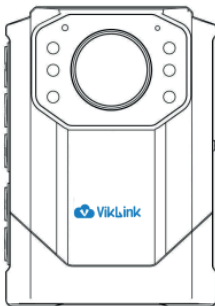
If the recorder does not work properly, please check if the device is out of power. During operation please do not pull out the external memory card. Otherwise, damage might be caused to the files or the device.



PACKING LIST

Please unpack carefully and check that all items listed below are received.
If any item is missing or damaged, please contact us in any time.

Item	Qty.	Item	Qty.
Body Worn Camera	1	USB Cable	1
Belt Clip	1	User Manual	1



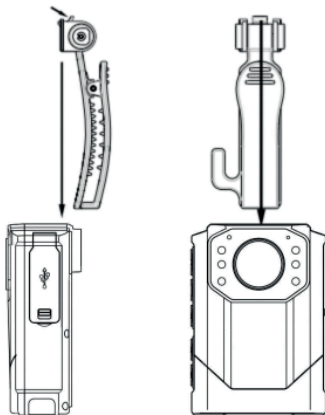
ATTACHING THE BELT CLIP

INSTALLATION:

Hold the host in one hand and the back clip in the other . Align the connection bracket of the back clip with the host slot according to the direction shown in the figure. Slowly push the back clip until the connection bracket reaches the bottom of the host slot and the bottom protrusion of the connection bracket is fastened on the host recess.

REMOVAL:

Hold the host with one hand and the back clip with the other. First, press the designated position with your thumb in the direction shown in the figure to make the bottom protrusion of the back clip's connection bracket disengage from the host recess . Then , slowly push the back clip until the connection bracket is separated from the host.



VIDEO MODE

- (1) In the camera preview status interface, you can use the "◀" key to enter the review playback interface. Press the "◀" or "▶" key, select the video option, and then short press the "≡" key to confirm to enter the video file list interface. The video file list reference interface is shown in the figure below.
- (2) Press the "◀" or "▶" key to select the video file to be played, and short press the "≡" key to enter the video playback interface. The video playback reference interface is shown in the figure below:
File deletion can only be performed by connecting to a computer.
- (3) Video playback
 - ① Press the "◀" or "▶" key to select the file to be played.
 - ② Press the "≡" key to start playback, and the working status indicator will light up green.
 - ③ During playback, press the "≡" key to pause playback. Press the "≡" key again to continue playback at the previous position.
 - ④ During playback, short press the "◀" or "▶" key to select 2x, 4x, 8x, fast rewind or fast forward the currently playing file.



For more information, please visit: www.viklink.com